



LCB3

Lubrication Unit



LCB3

MODEL CODE

LCB3 1 1 C

Power
C : 1Phase AC100V 50 / 60Hz
B : 1Phase AC200V 50 / 60Hz

Pressure Gauge Option
0 : None
1 : Pressure Gauge Fitted

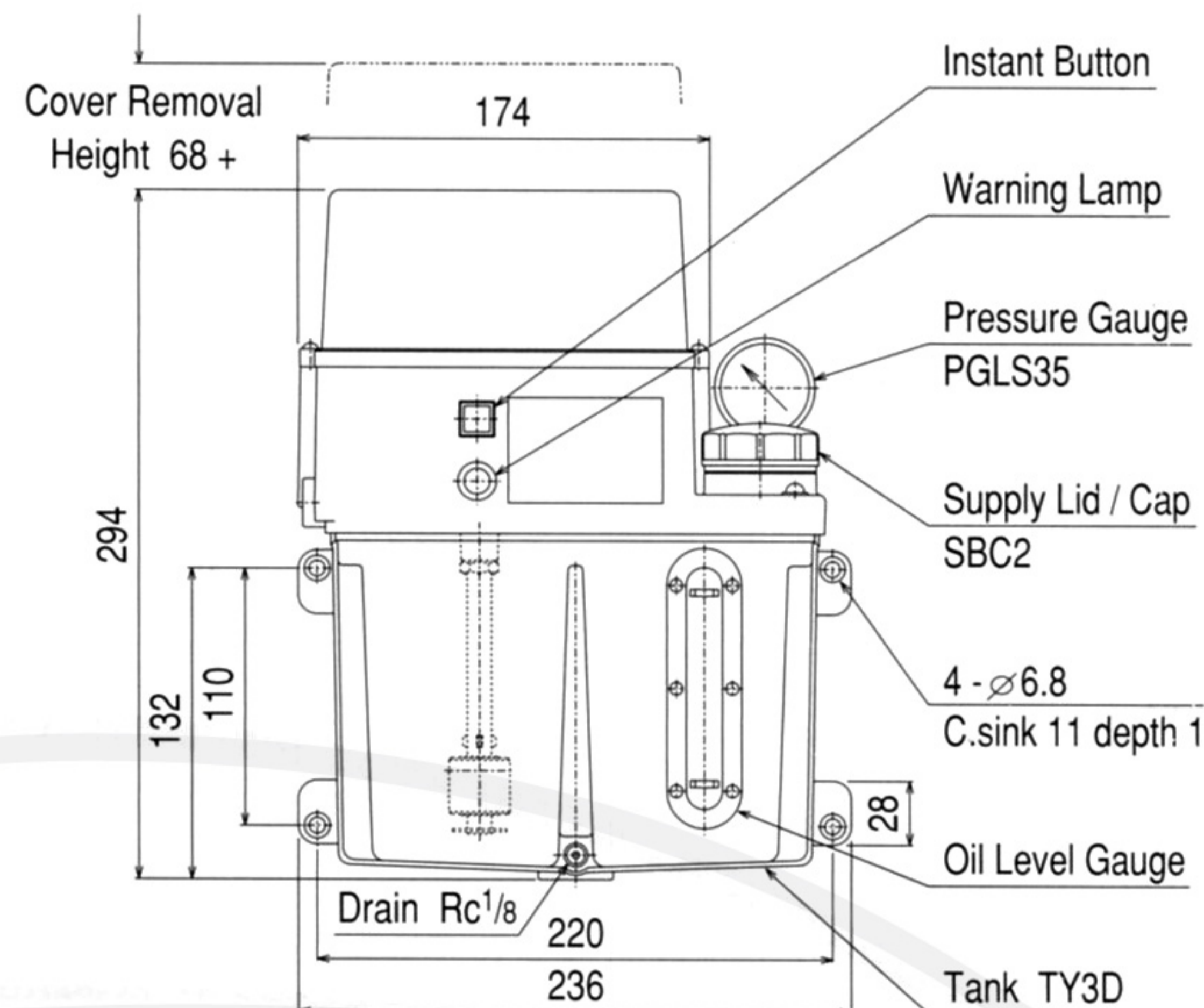
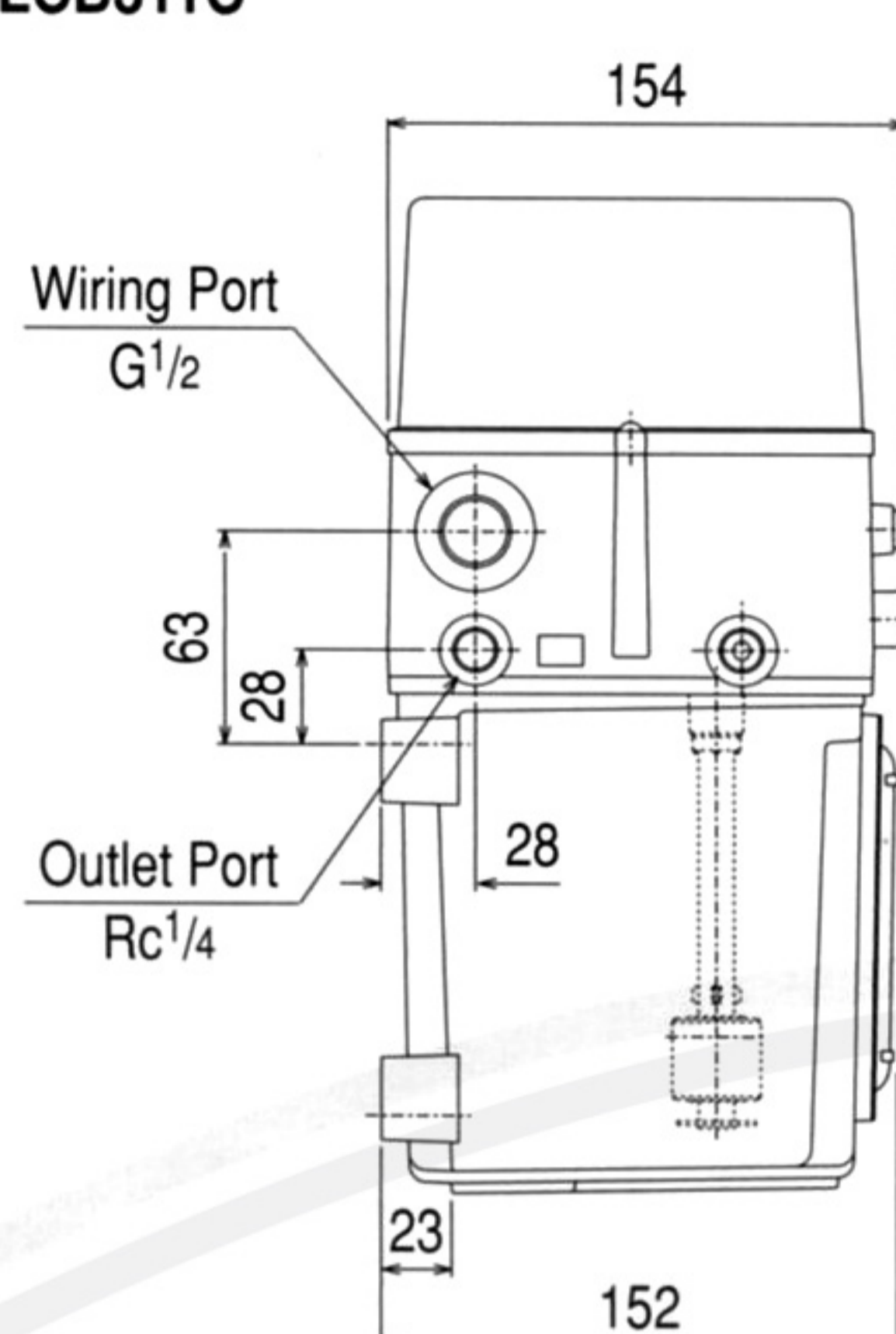
Optional Attachments
1 : YT Timer, Float & Pressure Switch
2 : Float & Pressure Switch
3 : Float Switch
4 : Pressure Switch
5 : None

Base Code

- Motorized pump unit for the volumetric type system
- Discharge timer option available (10 settings between 2 to 192 minutes)
- General purpose pump unit

The LCB3 units are fitted with a die-cast aluminum 3.4L tank, cover, and flange. IC timer (control board) fitted units can be adjusted to operate between 2 to 192 minutes. These units are also fitted with indicator lamps, enabling verification of operational status and errors. Immediate oil distribution can be initiated manually, by pressing the "Instant Button".

LCB311C



MOTOR SPECIFICATION

Voltage & Freq.	100V 50Hz	100V 60Hz	200V 50Hz	200V 60Hz
Current (A)	1.5A	1.2A	0.8A	0.6A
Output & Poles	17W x 2P			
Operation	Max. 5mins with resting time of operation x 2			

* E - type insulation

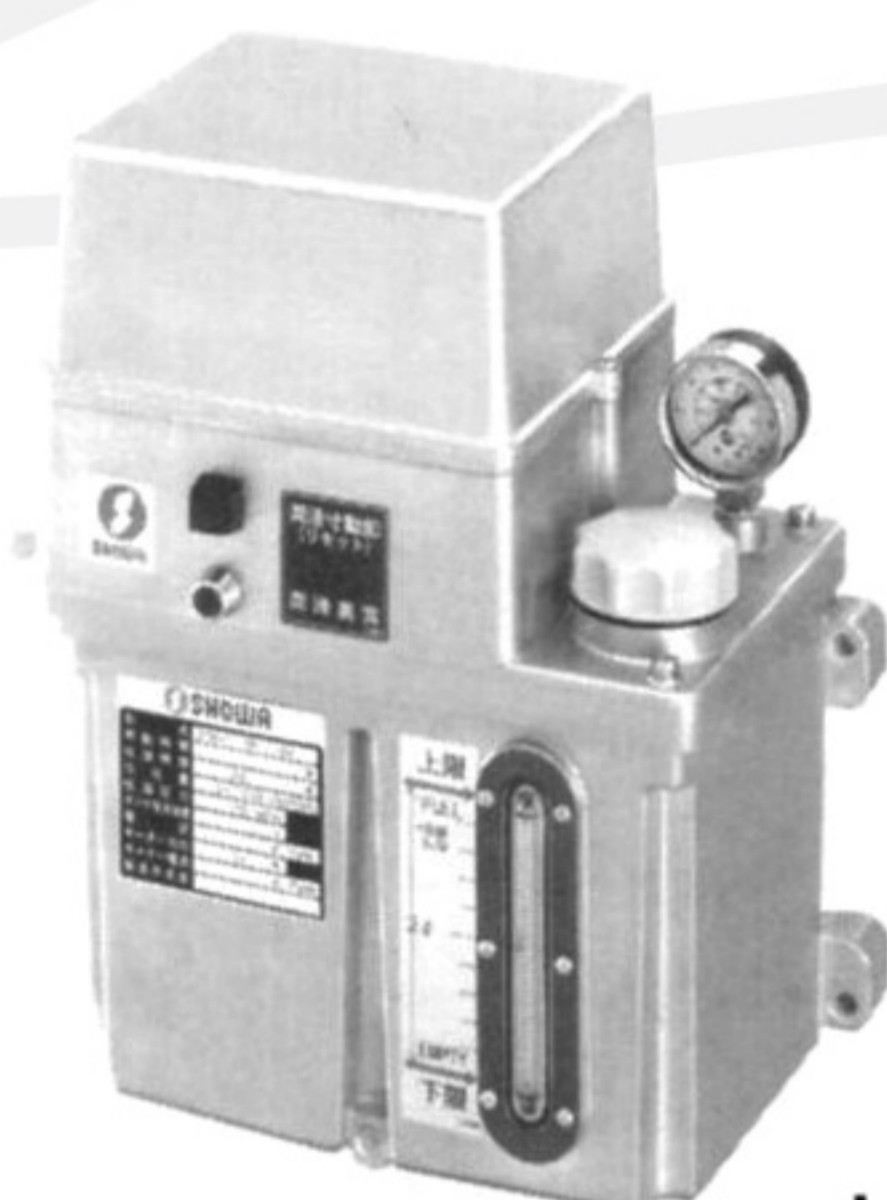
SPECIFICATIONS

MODEL CODE	Pump Utilized	Intermittence (YT Timer Option)	Discharge Vol. (cm ³ /cycle)	Discharge Pressure	Tank Capacity (L)	Effective Tank Capacity (L)	Viscosity Range
LCB3	MLB01W1	2, 4, 6, 8, 16, 24, 32, 48, 64, 128, 192 mins	0.1L 50Hz 0.12L 60Hz	1.2MPa	3.4	2	50 ~ 800 mm ² /s

* Lubricant can be discharged by pressing the "Instant button". The pump will continue to operate until the button is released.

LCB3 (TMS)

Lubrication Unit



LCB3 TMS

MODEL CODE

LCB3 01 05 C - 04

Drain Port Size
- : Rc 1/8
04 : G 1/2

Power
C : 1Phase 100V 50 / 60Hz
B : 1Phase 200V 50 / 60Hz

Timer
05 : YU1 Timer

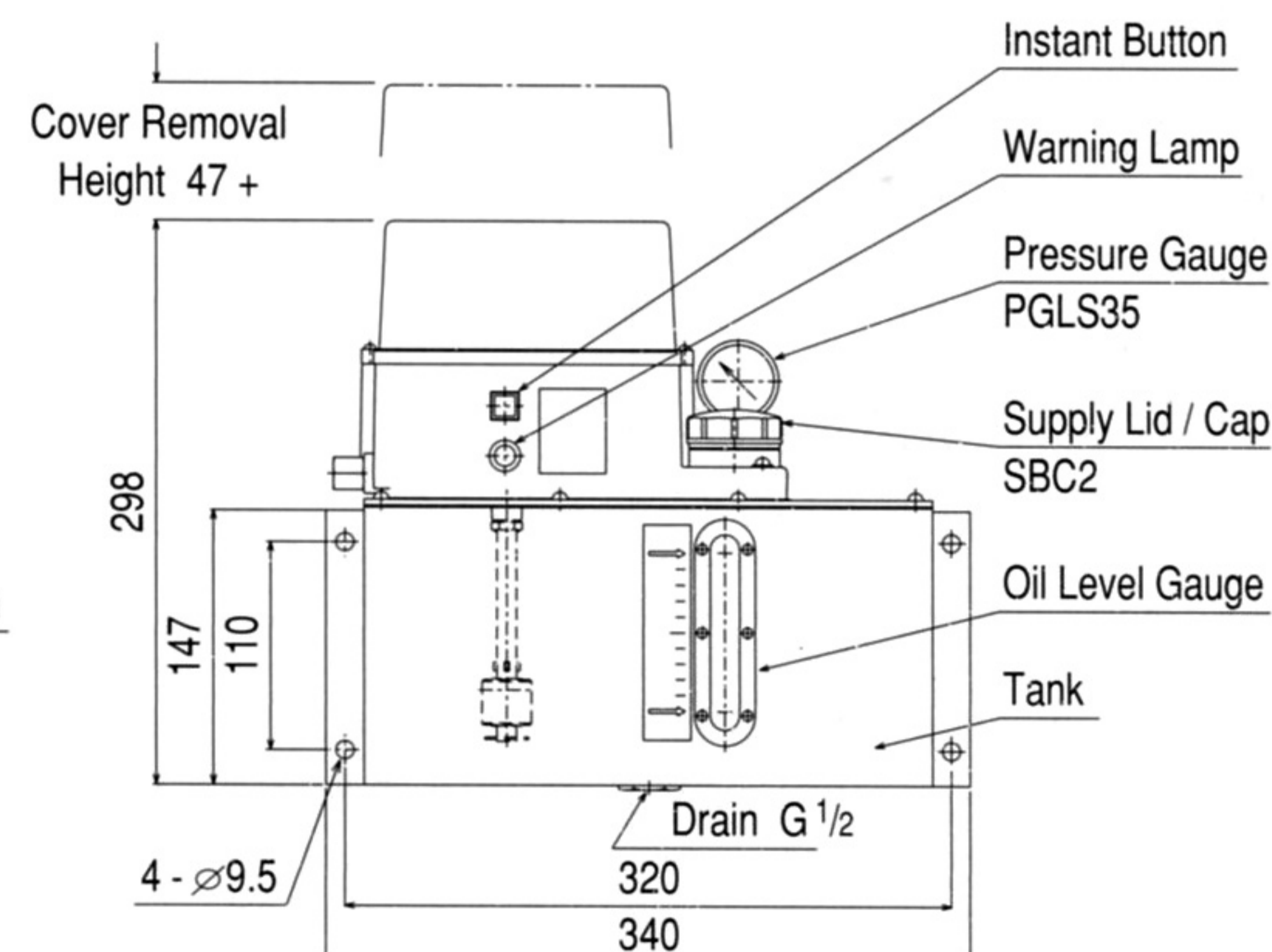
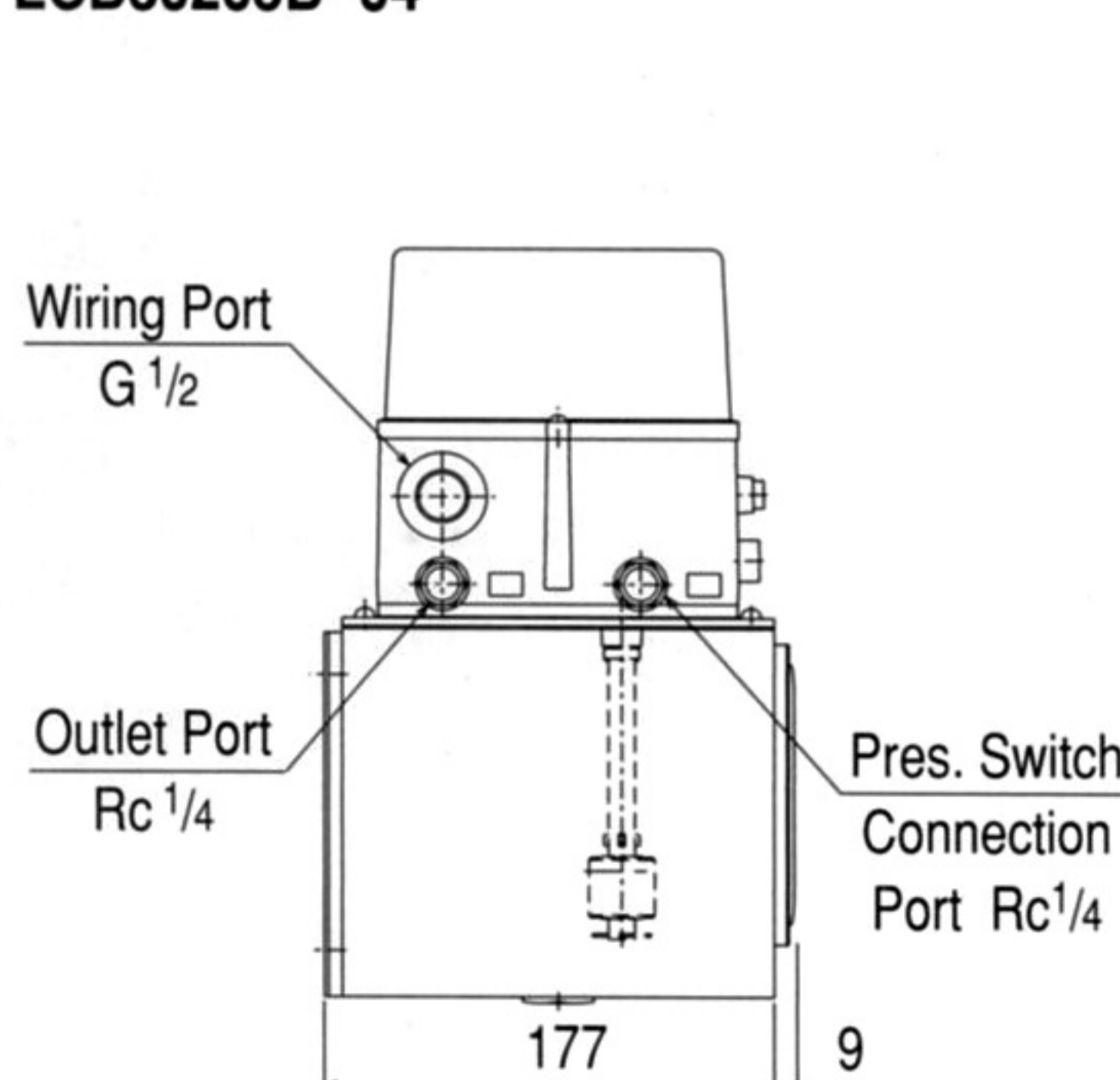
Tank Type (Effective Capacity)
01 : 2L Aluminum Tank
02 : 4.4L Steel Tank
03 : 10.9L Steel Tank

Base Code

- TMS compliant - volumetric type automatic pump unit
- Discharge frequency can be controlled by timer or impulse
- Array of functions and features to suit various lubrication system requirements

The LCB3 TMS model lubrication unit possesses a controller which complies to the TMS standards. The unit's operation (discharge frequency or intermittence) can be controlled by either an intermittence timer or an impulse count timer and can also be controlled from an external source. Possessing a pressure & float switch, effective lubrication management can be undertaken with ease.

LCB30205B -04



MOTOR SPECIFICATION

Voltage & Freq.	100V 50Hz	100V 60Hz	200V 50Hz	200V 60Hz
Current (A)	1.6A	1.3A	0.9A	0.7A
Output & Poles	17W x 2P			
Operation	Max. 5mins with resting time of operation x 2			

* E - type insulation

* Specified intermittence can be increased by 2x, 3x or 4x

SPECIFICATIONS

MODEL CODE	Intermittence (Impulse or mins)	Discharge Vol. (L / minute)	Discharge Pressure	Tank Capacity (L)	Effective Tank Capacity (L)	Viscosity Range	Warning Triggers
LCB301	2, 4, 6, 8, 16, 24,	0.1L / 0.12L 50Hz / 60Hz	1.5MPa	3.4	2	50 ~ 800 mm ² /s	Pressure surge, pressure loss, low oil levels
LCB302	32, 48, 64, 128			5.5	4.4		
LCB303	(Can be modified)			14.4	10.9		

* Lubricant can be discharged by pressing the "Instant button". The pump will continue to operate until the button is released.

LCB4

Lubrication Unit



LCB4

MODEL CODE

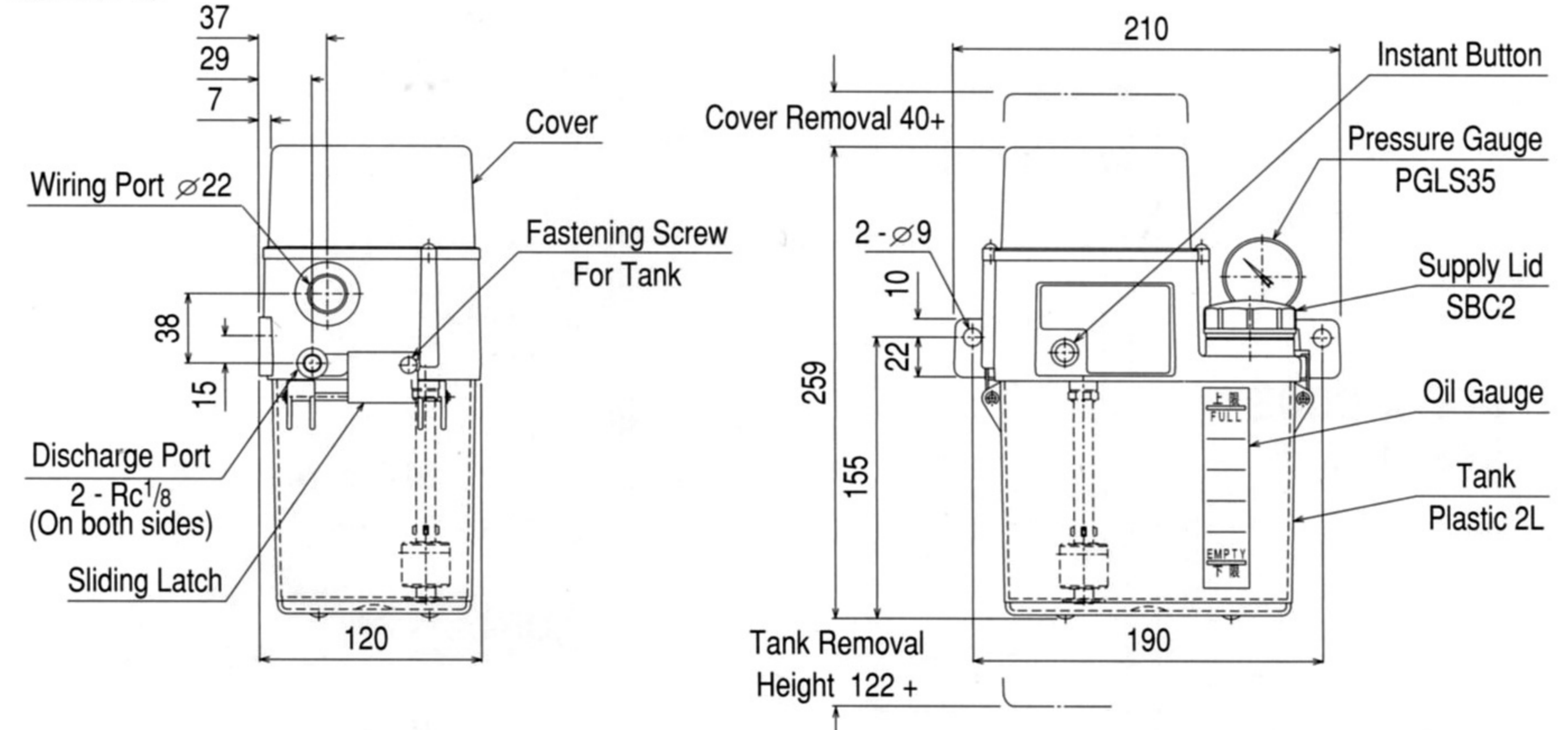
LCB4 0 1 1 C

Power	C : 1Phase AC100V 50 / 60Hz B : 1Phase AC200V 50 / 60Hz
Pressure Gauge Option	0 : None 1 : Pressure Gauge Fitted
Optional Attachments	1 : Float & Pressure Switch 2 : Float Switch 3 : Pressure Switch 4 : None
Tank Type	0 : 2L Plastic Tank 1 : 2L Aluminum Tank
Base Code	

- Motorized pump unit for the volumetric type system
- Combines a MLB01W2 pump with a 2L tank
- Lubrication unit without an IC timer (control board)

The LCB4 is a compact centralized lubrication unit supplied without an IC timer (control board). LCB4 available with varying combinations of a pressure switch, pressure gauge or a float switch. Requires connection to a timer system to enable intermittent operation.

LCB4011C



MOTOR SPECIFICATION

Voltage & Freq.	100V 50Hz	100V 60Hz	200V 50Hz	200V 60Hz
Current (A)	1.5A	1.2A	0.8A	0.6A
Output & Poles	17W x 2P			
Operation	Max. 5mins with resting time of operation x 2			

* E - type insulation * Minimum 2 mins resting time required

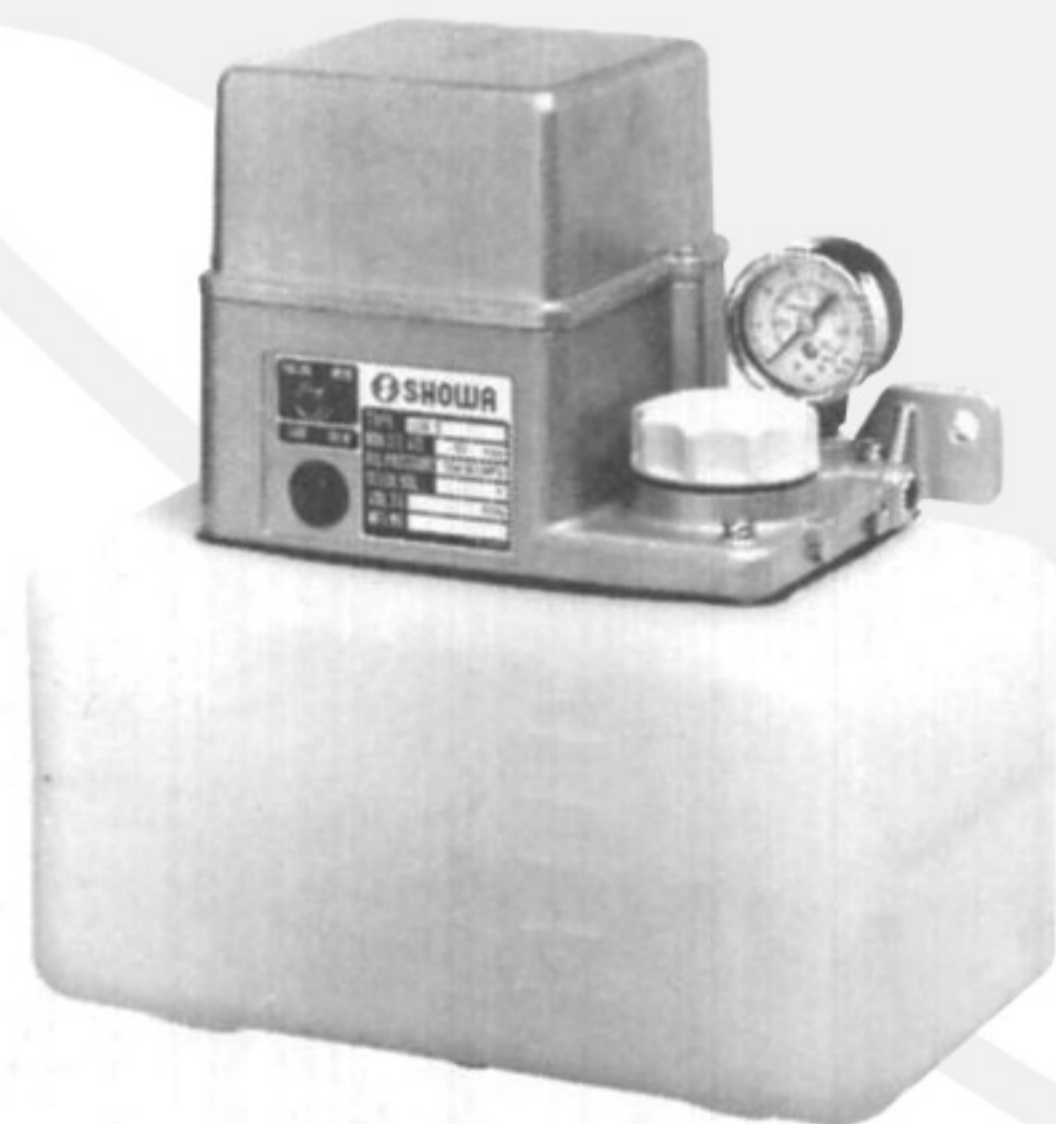
SPECIFICATIONS

MODEL CODE	Pump Utilized	Discharge Vol. (cm ³ /cycle)	Discharge Pressure	Tank Capacity (L)	Effective Tank Capacity (L)	Viscosity Range
LCB4	MLB01W2	0.1L / 0.12L 50Hz / 60Hz	1.2MPa	2	1.3	50 ~ 800 mm ² /s

* Lubricant can be discharged by pressing the "Instant button". The pump will continue to operate until the button is released.

LCB5

Lubrication Unit



LCB5

MODEL CODE

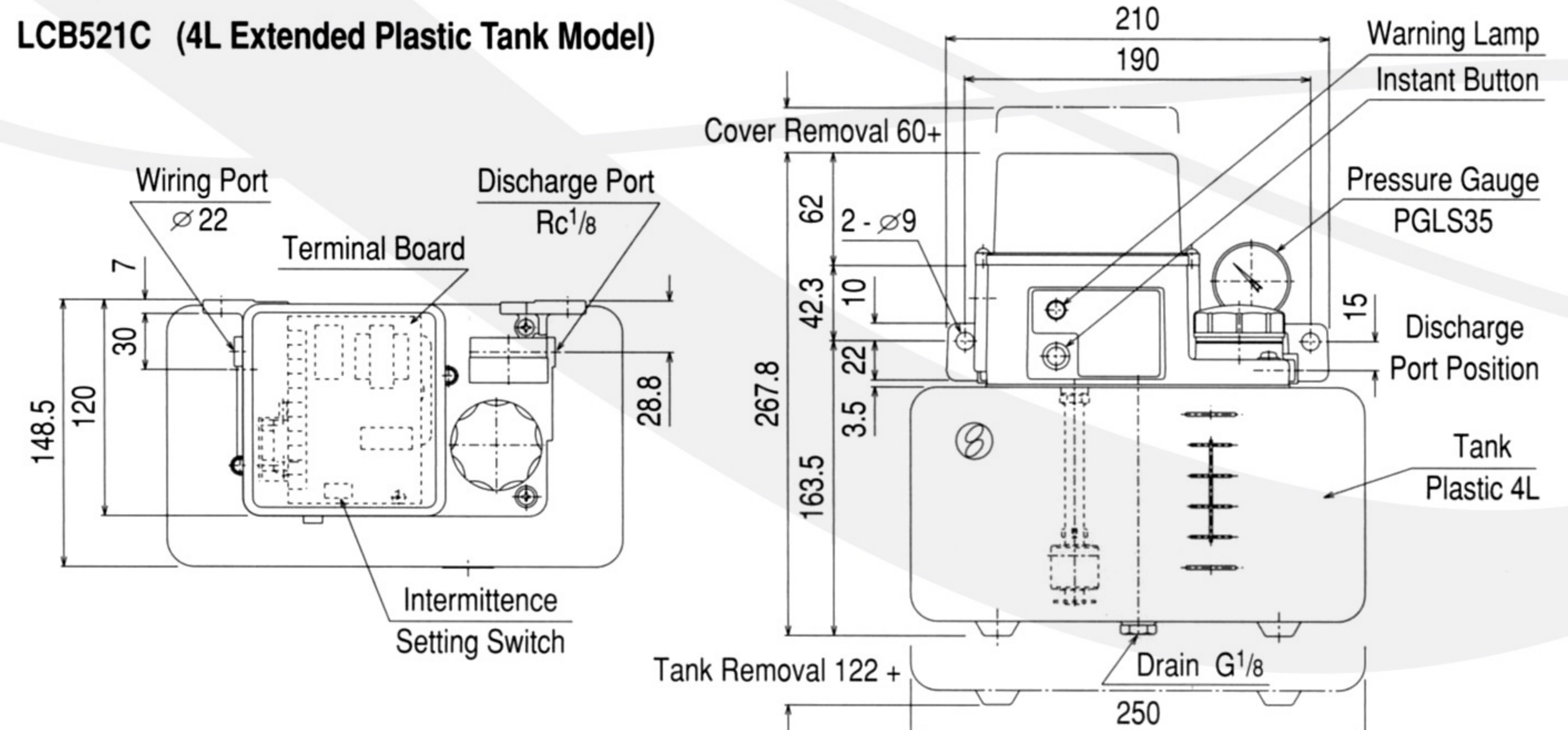
LCB5 2 1 C

Power	C : AC100V 50 / 60Hz B : 1Phase 200V 50 / 60Hz
Pressure Gauge Option	0 : None 1 : Pressure Gauge (PGLS35)
Tank Type	0 : 2L Plastic Tank 1 : 2L Aluminum Tank 2 : 4L Extended Plastic Tank
Base Code	

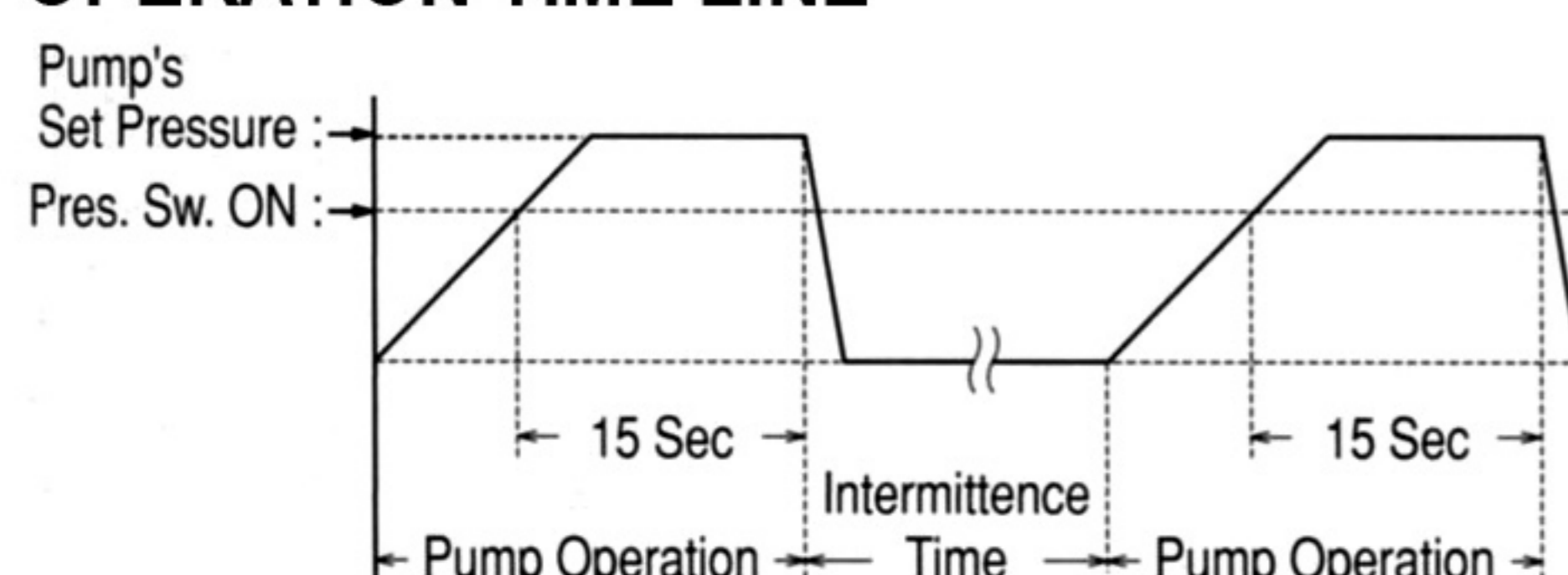
- Motorized pump unit for the volumetric type system
- Combines the LCB4 unit with an IC timer, pressure gauge and float switch
- A 2L plastic or die-cast aluminum tank and a 4L extended plastic tank are available

Based upon the LCB4 lubrication unit, the LCB5 are equipped standard with an IC timer (control board), a pressure switch, a float switch, an Instant discharge button and an option to select a 4L extended plastic tank and / or a pressure gauge. The intermittence time between discharges can be adjusted from a range of 2 ~ 180 minutes by simply altering the dip switch settings on the timer.

LCB521C (4L Extended Plastic Tank Model)



OPERATION TIME LINE



SPECIFICATIONS

MODEL CODE	Intermittence (Rest time in mins.)	Discharge Vol. (L / minute)	Discharge Pressure	Tank Capacity (L)	Effective Tank Capacity (L)	Viscosity Range	Warning Triggers
LCB50	2, 4, 6, 8, 10, 15, 20,	0.1L / 0.12L 50Hz / 60Hz	1.2MPa	2	1.3	50 ~ 800 mm ² /s	Pressure surge, pressure loss, low oil levels
LCB51	25, 30, 40, 50, 60, 90,			2	1.3		
LCB52	120, 150, 180			4	2.9		

* Lubricant can be discharged by pressing the "Instant button". The pump will continue to operate until the button is released.